

Belleville Area Museum



Community Engagement & Interpretive Planning



Museum Operations

Community Engagement Findings

- The community values the museum!
 - Majority willing to pay admission
 - Inconsistent/inconvenient hours barrier to visiting
-

Museum Operations

Suggestions

- Establish hours based on survey results, including some evening & weekend hours
 - Create communication & advertising channels—website, social media, etc.
 - Consider admission charges
-

Collections

Community Engagement Findings

- Historical value in collections
 - Collecting/preserving integral to the Museum's function
 - Collections & archives are currently “disorganized” and “unusable”
-

Collections

Suggestions

- Work with curatorial experts to establish a collections policy and strategy for: future acquisitions and deaccessioning.
 - Clarify role(s) of the Museum & Historical Society
 - Consider separating functions of the archives (paper records) from Museum collections (objects)
 - Engage in long-term digitization and public-access projects
 - Develop a plan for storage that is up to collections preservation standards & allows for public access
 - Create a research room within the Museum or storage area where collections can be accessed—allowing a public face for the collections.
-

Programming

Community Engagement Findings

- Mixed results: some thought programming was excellent, others were unaware
 - Programming is important to the community
 - Looking for opportunities to learn about local history
-

Programming

Suggestions

- Establish regular programming for:
 - Families
 - School Groups
 - Local history enthusiasts
 - Consider providing access to local historian/expert
 - Have tours/ docents available on a regular basis
-

Exhibits

Community Engagement Findings

- Mixed responses: some loved current exhibits others found it disorganized & unappealing
 - Learning about the past is a strong motivator for visits
 - Respondents wanted:
 - Object-based exhibits
 - Interactive exhibits
 - Temporary/changing exhibits
-

Exhibits

Suggestions

- Create dedicated space for temporary/changing exhibits
 - Build partnerships with other local museums/libraries to bring in temporary exhibits
 - Develop “package” of exhibit parts that can be used to build in-house exhibits using collections
 - Update & organize permanent exhibits around community-based themes
 - Use participatory experiences to help visitors connect the past to the future.
 - Exhibits should be reflective of the diversity of the 48111 community
-





Van Buren Township

BELLEVILLE AREA MUSEUM – Blocks and Blades

Scale:
3/16" = 1'-0"

Date:
Sept 07, 2022

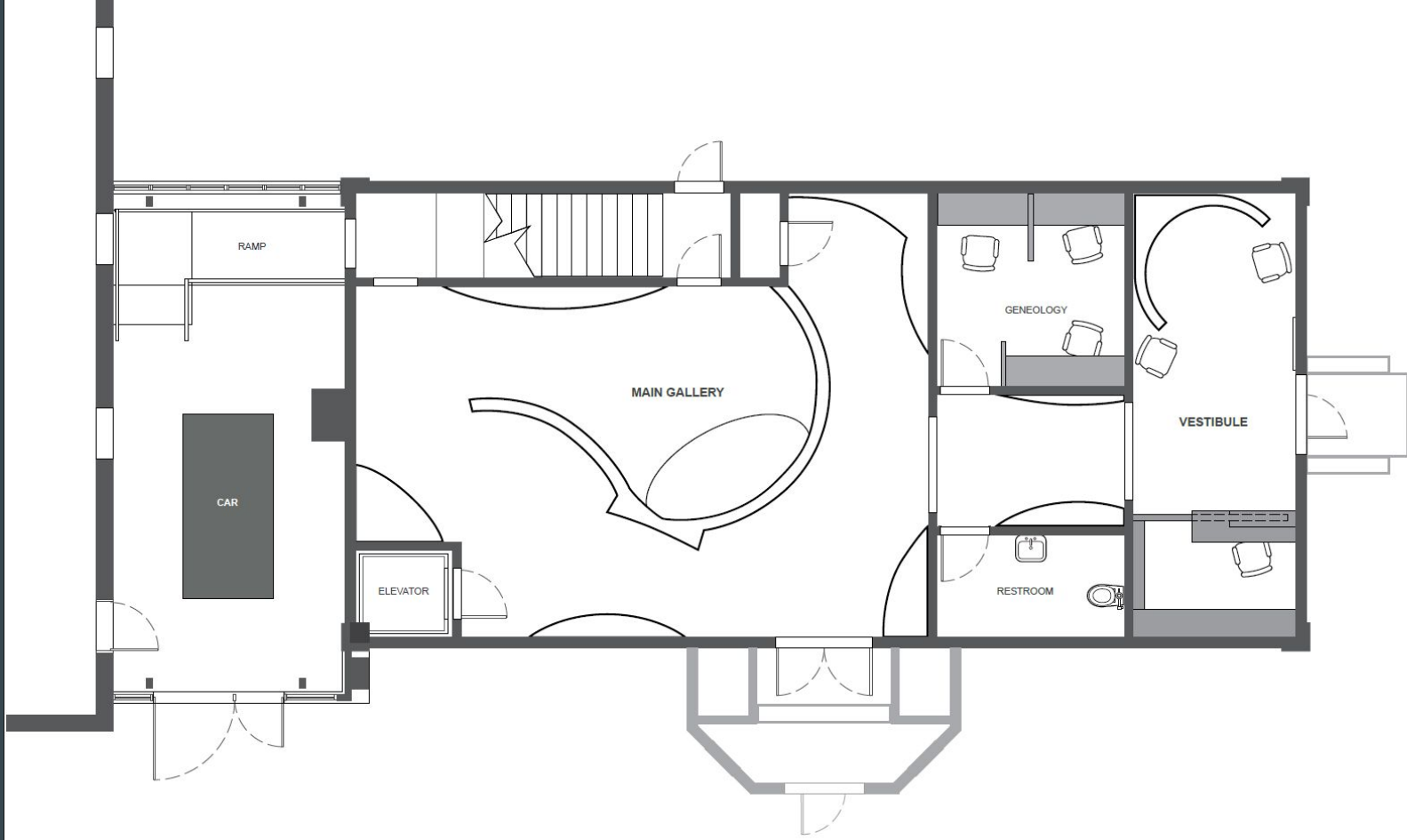
Drawing Number
CD 01.01











Van Buren Township

BELLEVILLE AREA MUSEUM – A River Runs Through It

Scale:
3/16" = 1'-0"

Date:
Sept 07, 2022

Drawing Number
CD 01.03







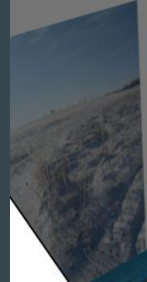
>Lorem Ipsum Dolor Sit

Maecenas non ipsum. Nulla orci tellus, porta at, condimentum ut, eleifend quis, arcu. In sagittis. Duis metus turpis, auctor a, fringilla in, tristique sit amet.

Nulla odio. Vestibulum ante ipsum primis in faucibus orci luctus et ultrices posuere cubilia Curae. Curabitur nulla Fusce augue. Proin sagittis dui ullamcorper rous. Phasellus dapibus tincidunt libero. Proin felis. Duis metus turpis, auctor a, fringilla san in, tristique sit amet, libero. Fusce nec; est nec; nisi facilis venenatis. Proin neque magna, pretium id, fringilla nec, viverra in, vel.

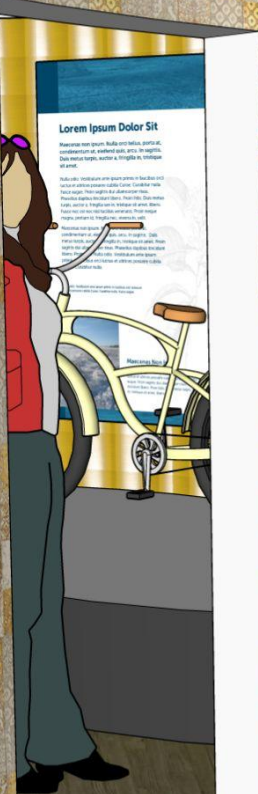
Maecenas non ipsum. Nulla orci tellus, porta at, condimentum ut, eleifend quis, arcu. In sagittis. Duis metus turpis, auctor a, fringilla in, tristique sit amet. Proin sagittis dui ullamcorper rous. Phasellus dapibus tincidunt libero. Proin felis. Nulla odio. Vestibulum ante ipsum primis in faucibus orci luctus et ultrices posuere cubilia Curae; Curabitur nulla.

Nulla odio. Vestibulum ante ipsum primis in faucibus orci luctus et ultrices posuere cubilia Curae; Curabitur nulla. Fusce augue.



Maecenas Non Ipsum

Nulla odio. Vestibulum ante ipsum primis in faucibus orci luctus et ultrices posuere cubilia Curae; Curabitur nulla. Fusce augue. Proin sagittis dui ullamcorper rous. Phasellus dapibus tincidunt libero. Proin felis. Duis metus turpis, auctor a, fringilla in, tristique sit amet, libero. Fusce nec; est nec; nisi facilis venenatis. Proin neque magna, pretium id, fringilla nec, viverra in, vel.



>Lorem Ipsum Dolor Sit

Maecenas non ipsum. Nulla orci tellus, porta at, condimentum ut, eleifend quis, arcu. In sagittis. Duis metus turpis, auctor a, fringilla in, tristique sit amet.

Nulla odio. Vestibulum ante ipsum primis in faucibus orci luctus et ultrices posuere cubilia Curae; Curabitur nulla. Fusce augue. Proin sagittis dui ullamcorper rous. Phasellus dapibus tincidunt libero. Proin felis. Duis metus turpis, auctor a, fringilla in, tristique sit amet, libero. Fusce nec; est nec; nisi facilis venenatis. Proin neque magna, pretium id, fringilla nec, viverra in, vel.

Maecenas non ipsum. Nulla orci tellus, porta at, condimentum ut, eleifend quis, arcu. In sagittis. Duis metus turpis, auctor a, fringilla in, tristique sit amet. Proin sagittis dui ullamcorper rous. Phasellus dapibus tincidunt libero. Proin felis. Nulla odio. Vestibulum ante ipsum primis in faucibus orci luctus et ultrices posuere cubilia Curae; Curabitur nulla.

Nulla odio. Vestibulum ante ipsum primis in faucibus orci luctus et ultrices posuere cubilia Curae; Curabitur nulla. Fusce augue.

